



العالمية لنشر و تقطيع الرخام ذ م م

UNIVERSAL

SHARJAH - DUBAI - ABUDHABI

**POWERFUL SOLUTION PARTNER
FOR YOUR DREAM PROJECT**

DESIGN - FABRICATION - INSTALLATION

ABOUT US



Universal Marble established by Mr. Mohammed Aslam Qureshi, who was born and raised in a stone business family and has been working in the United Arab Emirates stone industry since 2003.

Universal Marble specializing in the fabrication and installation of natural stones, engineered stones, and quartz products. Our focus is on understanding customer vision for the finished look and helping you make informed decisions about the materials that best suit your needs for durability and performance. Our offerings include high-quality fabrication and installation of Natural and Artificial Stones. We believe that quality products can transform any project into a beautiful masterpiece.

At Universal Marble, we are dedicated to providing the best customer service, making each customer's experience as pleasant as possible. Many of our clients come to us through referrals from satisfied customers. From our skilled staff to our highly skilled fabricators and dedicated installers, every Universal Marble employee treats each job as if it were for their own home. We pride ourselves on delivering the highest quality work and service to each client, whether it's a small bathroom countertop or an entire house. Each project receives the highest level of service and attention to detail. We stand behind all our work with a solid commitment to providing the greatest value of your investment.

Our employees are highly experienced, always available for consultation, and welcome questions about your specific needs and requirements. Our goal is to be the leading manufacturer and installer of the best quality natural stones, with courteous customer service.



WHAT WE DO



- **Consultation - Material selection as per client requirements.**
- **Preparation of quotes based on drawings.**
- **Site survey, Templating & Physical site measurements.**
- **Preparation of shop drawing.**
- **Fabrication and Finishing materials as per approved shop drawings.**
- **Waterproofing to protect the stone from stains.**
- **Packing & Delivering the materials to site.**
- **Arrangements of Sand, Cement, Glue & Etc.**
- **Installation of Materials**
- **Regular site inspection by Engineers.**
- **Repolishing and Crystallization of the floor surface before handing over the project.**
- **Gypsum protection after floor installation.**
- **Maintenance before handing over.**



OUR FABRICATION UNIT

1. ITALIAN 4 AXIS CNC BRIDGE CUTTER

ITALIAN 4 AXIS CNC BRIDGE CUTTER WHICH GIVES A HIGH QUALITY OF CUTTING WITH 360° ROTATE.



2. BRIDGE CUTTING MACHINE FOR GANGSAW

AUTOMATIC BRIDGE SAW FOR CUTTING GRANITE, MARBLE, QUARTZ & ENGINEERED STONES.



3. ITALIAN BRIDGE CUTTING MACHINE

ITALIAN 3 AXIS BRIDGE CUTTER GIVES A HIGH VOLUME OF PRODUCTION WITH QUALITY & STABILITY



4. WATERJET CUTTING MACHINE

ITALIAN WATER JET MACHINE TECHNIQUE IS USE TO CUT MEDALLION DESIGNS. INLAYS IN DIFFERENT MATERIALS WHICH UTILIZE ABRASIVE AND WATER STREAMS WITH PRESSURE TO CUT ANY SHAPES



5. ITALIAN 4 AXIS TILE CUTTING MACHINE

ITALIAN 4 AXIS BRIDGE SAW IS SPECIALIZED TO CUT PORCELAIN, CERAMIC, SINTERED & DEKTON TILES



WITH MODERN MACHINERIES



6. BRIDGE POLISH MACHINE

ADVANCED BRIDGE POLISH MACHINE TO GRIND FULL SLAB, REPOLISH, HONED, LEATHER OR BRUSH FINISH IN SURFACE

7. AUTOMATIC 45° CUTTER

AUTOMATIC 45° CUTTER GIVES A PROPER CUT ON ANY KIND OF STONE EDGE AND MAKE GROOVE LINES.



8. AUTOMATIC PROFILE MACHINE

CNC SHAPING STONE MACHINE FOR CURVING, PROFILING TO ANY SHAPE AND CAN CUT WITH TEMPLATES AS PER REQUIREMENTS

9. MANUAL POLISH AND BUSHAMER MACHINE

MANUAL TABLE POLISH MACHINE FOR MAKING BUSH HAMMER FINISH TO ANY KIND OF STONE, GRANITE OR MARBLES



10. EDGE POLISH AND EDGE PROFILE MACHINE

STONE EDGE POLISH MACHINE FOR ROUNDING THE EDGES TO ANY KIND OF SOFT OR HARD STONE IN VOLUME

11. SAND BLASTING AND FLAMING SERVICES

OUR FACTORY PROVIDES A HIGH QUALITY OF MANUAL SANDBLASTING, FLAMING SERVICES TO MARBLE, GRANITES & OTHER NATURAL STONES.



OUR INSTALLATION PROJECTS



“ We have completed numerous luxury villas, commercial towers, offices, restaurants, mosques, and retail stores. With our extensive experience, you can be assured that you are in great hands ”





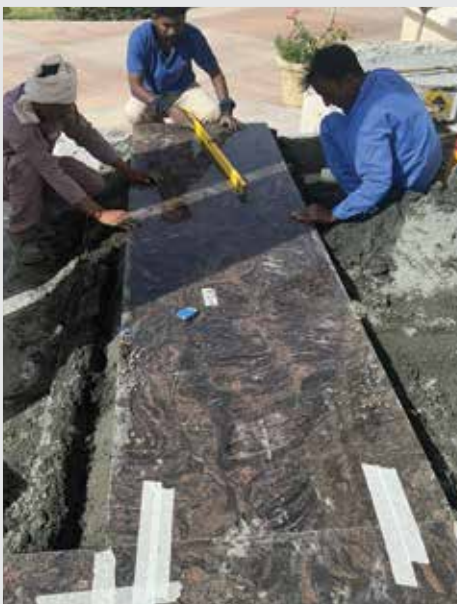
*You can design, create and
build the most wonderful
place in the world. But
it takes people to make the
dream into reality - that's
TEAM WORK*



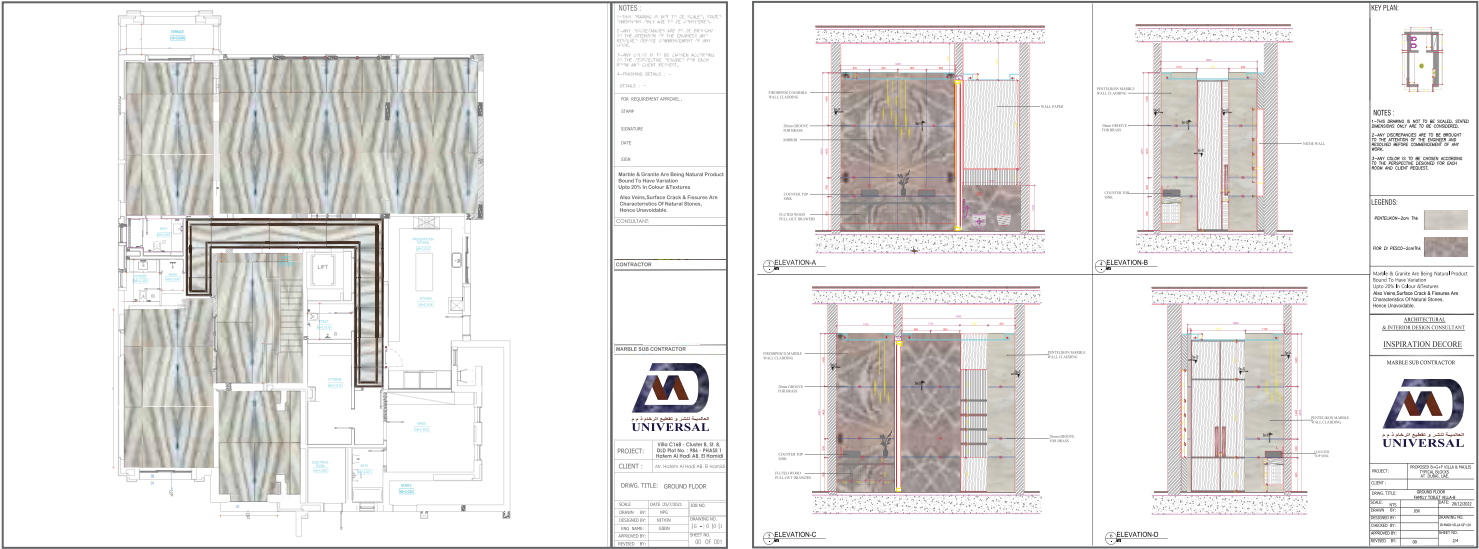
SCENES BEHIND THE PROJECT



TEAM WORK



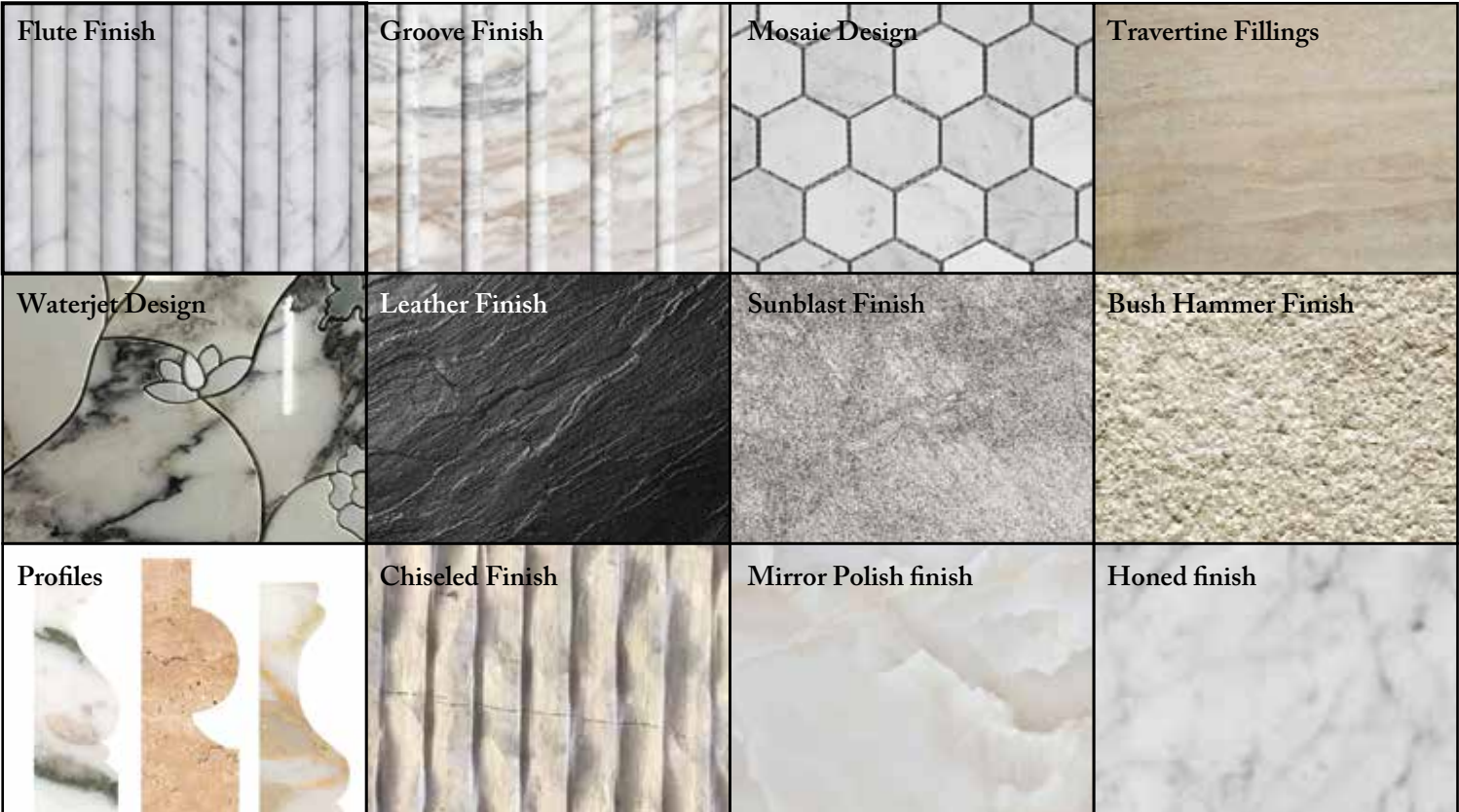
OUR DESIGN PROPOSALS



DRYLAY & WATER PROOFING IN OUR FACTORY



OTHER SURFACE FINISHING SERVICES IN OUR FACTORY



HIGHLIGHTED PROJECTS EXECUTED IN 2023 & 2024

CLIENT NAME	LOCATION	VALUE
* PALACE AL SUFOUH, DUBAI	AL SUFOUH, DUBAI	AED 3,XXX,XXX
* XXXXXX BUILDING CONTRACTING LLC	VILA 29-31 PALM JUMEIRAH	AED 6,XXX,XXX
* PRIVATE MANSION OBAID MOHAD AL HELO	TWIN VILLA AL KHAWANEEJ	AED 5,XXX,XXX
* PRIVATE VILLA - MR HATEM EL HADI ABEL HAMIDI	PRIVATE VILLA MBR CITY DUBAI	AED 2,XXX,XXX
* PRIVATE VILLA MR. KULPREET S SAHNI	PRIVATE VILLA EMIRATES HILLS	AED 2,XXX,XXX
* H.H OBAID MOHAMMAD HASHER AL MAKHTOOM	AL SUFOUH, DUBAI	AED 2,XXX,XXX
* DABASHAN VILLA	SULAYMANIYAH IRAQ	AED 3,XXX,XXX
* IDMAJ INTERIORS SAIF AL KUWAITI VILLA	AL SAROUJ AL-AIN	AED 2,XXX,XXX
* LYLE PRIVATE FARM HOUSE	TANZANIA AFRICA	AED 2,XXX,XXX
* DR. SAWSAN & MR. JALAL VILLA	PRIVATE VILLA AL ZAHIIYA	AED 2,XXX,XXX
* ROYAL ATLANTIS PALM JUMEIRAH	PALM JUMEIRAH DUBAI	AED 4,XXX,XXX
* PRIVATE VILLA FOR MR. ABDUL GHAFOOR AL QASIM	AL BARSHA DUBAI	AED 2,XXX,XXX

Universal Marble's impressive track record includes the completion of more than 200 luxury projects and over 3000 general projects in the past years across Gulf and African countries. This extensive portfolio underscores their expertise and capability to deliver high-quality work across diverse project types and regions, consolidating their position as a leading player in the industry.

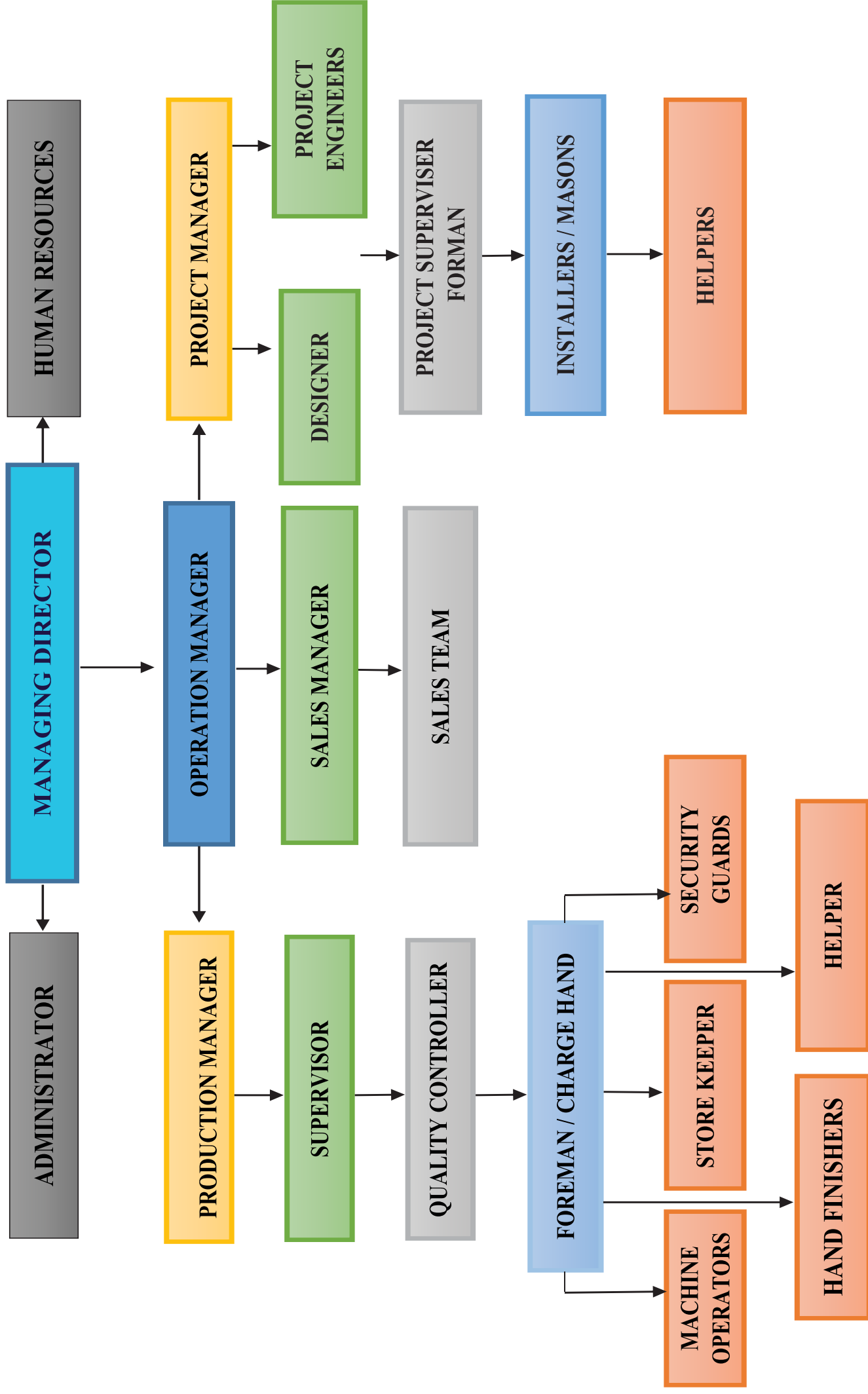
MANPOWER DETAILS

DESCRIPTION	NUMBERS
MANAGING DIRECTOR	1 NO'S
OPERATIONAL MANAGERS	2 NO'S
PROJECT MANAGER	2 NO'S
ESTIMATION / SALES TEAM	3 NO'S
OFFICIAL SUPPORTING STAFF	22 NO'S
QUALIFIED EXPERIENCE SITE ENG.	9 NO'S
DESIGNERS	6 NO'S
SITE SUPERVISOR	7 NO'S
INSTALLATION SKILLED MASONS	70 NO'S
INSTALLATION HELPER	22 NO'S
FACTORY MANAGER	2 NO'S
FACTORY SUPERVISOR	2 NO'S
QUANTITY CONTROLLER	1 NO'S
PRODUCTION SKILLIED WORKER	48 NO'S
PRODUCTION HELPER	28 NO'S

DAILY PRODUCTION CAPACITY

DESCRIPTION	PRODUCTION CAPACITY
MARBLE CUTTING	400+ SQM
GRANITE CUTTING	300+ SQM
PORCELAIN TILE CUTTING	200+ SQM
SINTERED STONE CUTTING	150+ SQM
SURFACE FINISHES	50+ SQM
WATERJET CUTTING	150+ LMR
PROFILE (AS PER DESIGN)	50+ LMR
FLOOR INSTALLATION	200+ SQM
WALL INSTALLATION	120+ SQM
SKIRTING INSTALLATION	600+ LMR
THRESHOLD'S INSTALLATION	400+ LMR
VANITY COUNTER INSTALLATION	200+ LMR
STEPS INSTALLATION	300+ LMR
STONE CLADDINGS	200 SQM
TRANSPORTATION/DELIVERIES	3 - 5 TRIPS/DAY

OPERATIONAL CHART



OUR LOCATIONS

E.I.C. Sajja, Sharjah



Mussafah, Abudhabi





UNIVERSAL MARBLE

*Is One Of The Largest Fabricator And Installer
With Modern Machineries In United Arab Emirates*



CONTACT US

✉: info@universalmarbles.com,

☎: +971 6 523 3209 +971 52 399 6001

📷: [universalmarbledubai](https://www.instagram.com/universalmarbledubai), 🌐: <https://universalmarbles.com>

📍: E.I.C. Sajja, Sharjah, United Arab Emirates (Main Branch)